



COMPANY PROFILE

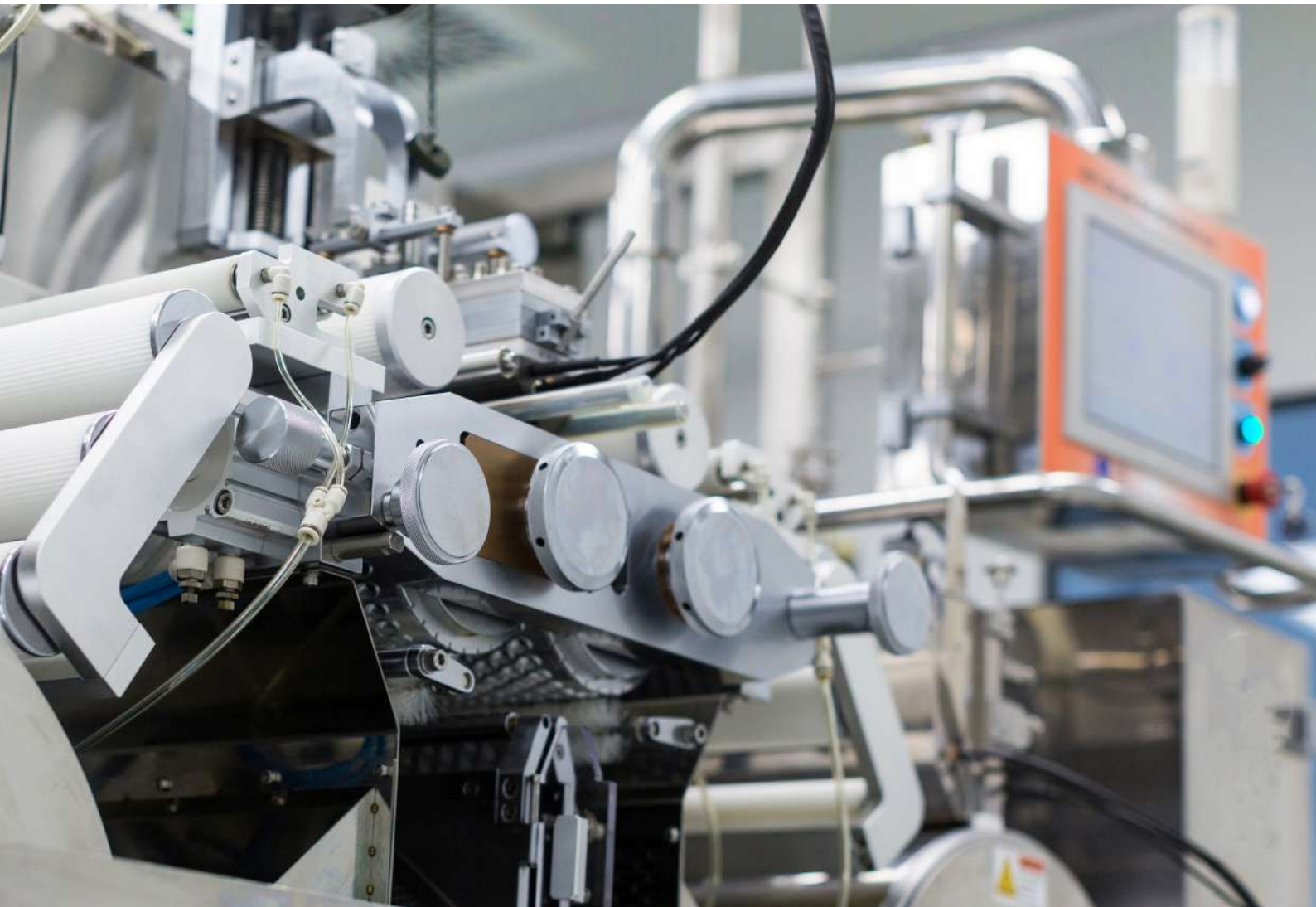
**Industrial Automation •
Control System • Engineering**





TABLE OF CONTENTS

Introduction	03
Our Offerings	04
Organization Structure	05
Brand Partnership	06
Service Workflow	06
Product Lineup	07
Project Portfolio	26



INTRODUCTION

PT Dwipa Raya Unix was founded in response to the burgeoning demand for industrial automation devices and spare parts. Recognizing the critical role these components play in enhancing operational efficiency and productivity across various industries, we are committed to providing and distributing high-quality automation products. Our mission is to bridge the gap between the increasing market needs and the availability of reliable automation solutions, ensuring that our clients can access the latest and most effective technologies.

A key aspect of our offerings includes the distribution of products under the renowned **B&R Industrial Automation GmbH, Pilz GmbH & Co., Lenze, Simco-Ion, Toyo Denki, Fatek Automation Corp., and Watanabe Electric Industry**. By partnering with brand principals, we aim to bring their innovative and reliable automation solutions to the Indonesian market. Our dedication to quality and customer satisfaction drives us to continually expand our product range and improve our service delivery, positioning us as a trusted partner in the industrial automation, robotic, and motion control sector.



OUR OFFERINGS



Spare Parts

We supply an extensive range of spare parts tailored for factories operating in diverse industries. Our offerings cater to the specific needs of sectors such as food and beverage, printing, and agribusiness, among others. By providing high-quality components, we ensure that your production lines remain efficient and reliable, regardless of your industry.



Maintenance

In addition to providing high-quality spare parts, we offer comprehensive maintenance and troubleshooting services for all purchased devices. Furthermore, we provide condition assessment services for your devices, allowing you to keep track of their operational status and maintenance needs. These assessments are available on a daily fee basis.

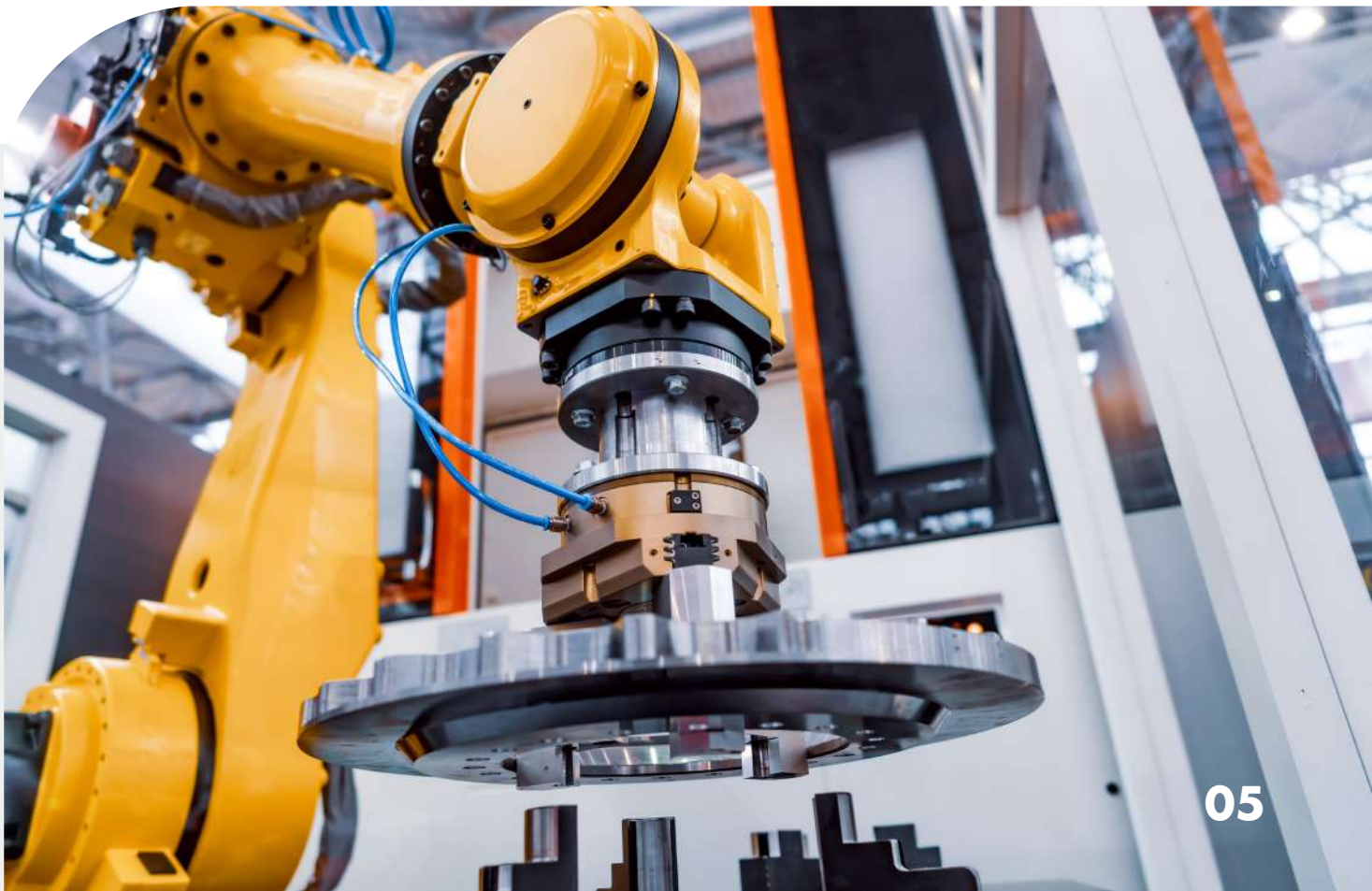
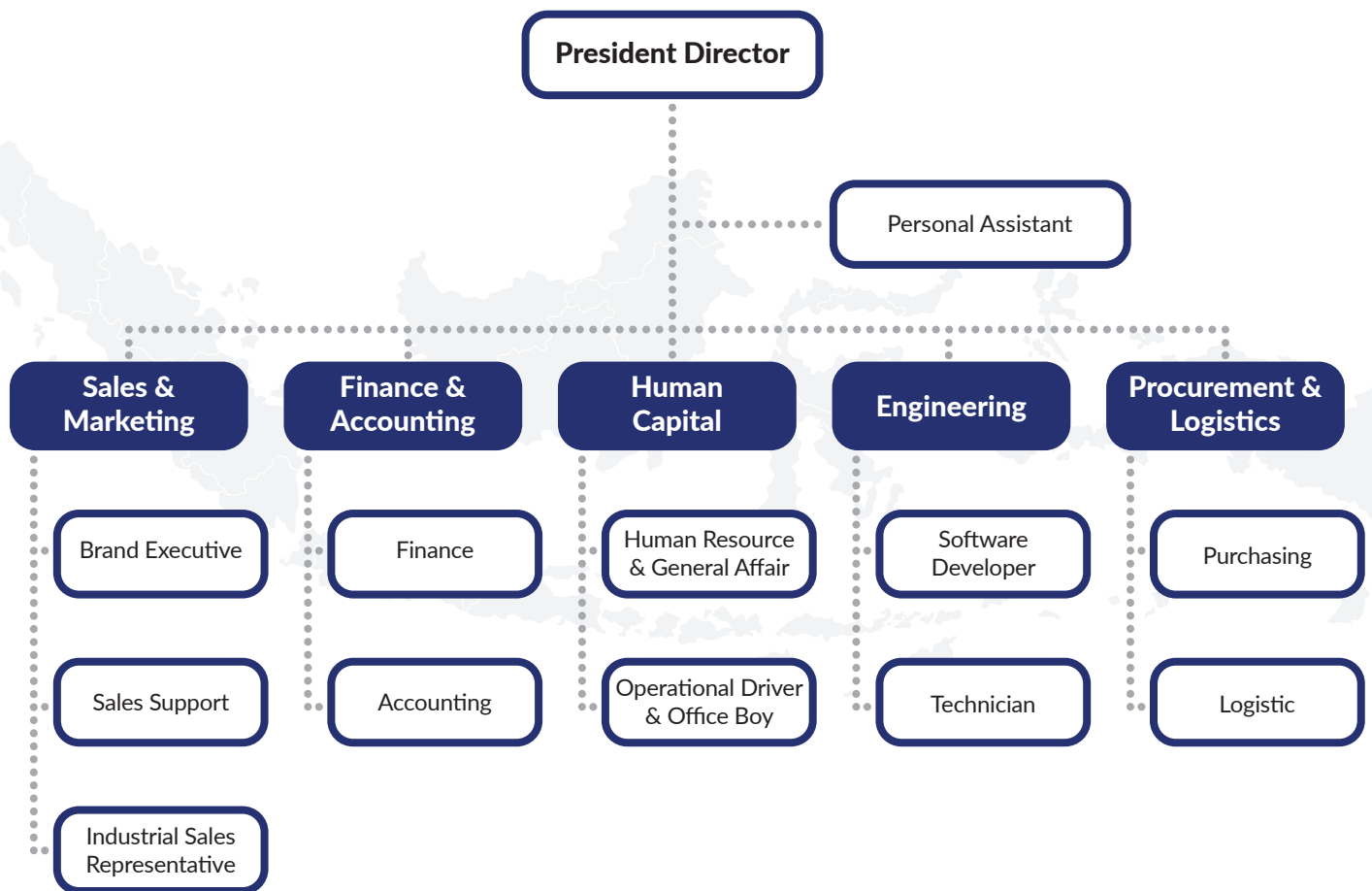
Why you can trust PT Dwipa Raya Unix?

To demonstrate our commitment, we are one of the few select Indonesian companies qualified as a technical distributor for B&R Industrial Automation GmbH, Pilz GmbH & Co., Lenze, Simco-Ion, Toyo Denki, Fatek Automation Corp., and Watanabe Electric, establishing a strategic partnership.

Our founder, chief engineer, and team members bring over 20 years of experience in engineering and corporate strategies, underscoring our expertise and dedication to excellence in the industry.



ORGANIZATION STRUCTURE



BRAND PARTNERSHIP

We take great pride in being the official distributor for a distinguished range of brands, recognized for their innovation and reliability in the industrial automation sector, including:



SERVICE WORKFLOW

01

Customer request and consultation

We actively listen to your needs, analyze your specific requirements, and provide expert advice to tailor the most effective solutions for your business.

02

Solution of design, planning, or product recommendation

We proceed with designing a customized solution, providing product recommendations that are best suited to meet your operational goals and enhance overall efficiency.

03

Procurement and resource allocation

We ensure that all necessary materials and resources are acquired and distributed effectively to support the seamless execution of the project.

04

Product shipment or project implementation

We guarantee timely product shipment or project implementation, ensuring that all components are delivered and installed efficiently to meet your specified requirements.

05

Quality assurance and monitoring

We conduct rigorous quality assurance and monitoring processes to ensure that all products and solutions meet our high standards of performance and reliability.

06

Project completion and review

We do a comprehensive review to evaluate the outcomes, ensuring all objectives have been met and addressing any feedback to continuously improve our services.

07

Continuous improvement, maintenance, or troubleshooting

We commit to continuous improvement, providing ongoing maintenance and troubleshooting services to ensure optimal performance and refine our solutions.



B&R Industrial Automation GmbH

B&R is one of the world's leading solution providers for machine and factory automation and is responsible for machine automation within ABB's Robotics & Factory Automation division. Continuous innovation and strong partnerships have characterized B&R for more than 45 years.

PT Dwipa Raya Unix is proud to be an official **Value Provider** for **B&R** as a **Technical Distributor** in Indonesia, bringing world-class automation solutions to the local market. With this partnership, we ensure that industries across Indonesia have access to cutting-edge technology, expert consultation, and reliable support for their automation needs.



VALUE PROVIDER

**Technical
Distributor**

Control System



Standard X20 PLC



X20 Compact-S PLC



**BEST
SELLER**

X20 Series

X20 series is highly flexible and scalable PLC system for a wide range of applications.

X90 Series

X90 series is designed for mobile automation, such as in vehicles, mobile machinery, and outdoor equipment.

I/O Modules



X20 I/O Module

The X20 System is the ideal addition to a standard fieldbus and expands the possibilities of standard control systems. Simply connect it, configure it, and you're done.



Remote I/O with IP67 Protection

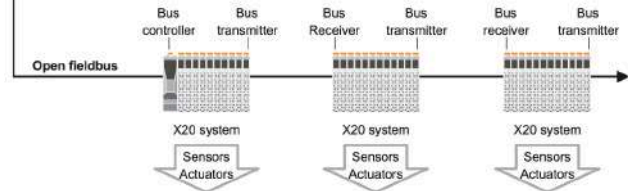
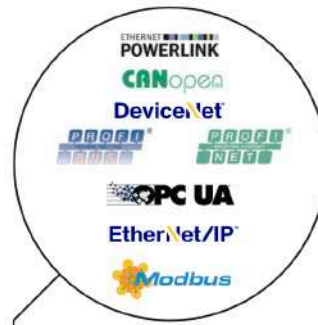
Remote I/O with IP67 protection is designed for decentralized automation with IP67 protection for harsh environments.

PRODUCT LINE-UP



B&R Field Bus: Powerlink

- Realtime capable network protocol
- Fast Ethernet Base up to 100 Mbits/s
- Master (Managing Node/MN) and Slave (Controlled Node/CN) based with CN up to 239
- Polling request and response based
- Can handle isochronous phase (cyclic data transfer) and asynchronous (non-cyclic data transfer)
- 20 μ s minimum cycle time
- Redundant feature



B&R Industrial PC



Automation PC 2100

The Automation PC 2100 is a compact, energy efficient solution designed for space-constrained installations. Powered by Intel Atom processors, it delivers reliable performance for typical machine control and HMI applications, while its fanless design ensures maintenance free operation in harsh industrial settings.



Automation PC 3100

The Automation PC 3100 offers a balance of compactness and high performance, featuring Intel Core i processors for scalable computing power. It's highly modular, making it suitable for a wide range of automation tasks, from machine control to real-time data processing, all within a compact, durable form factor.



Automation PC 910

The Automation PC 910 is a high-performance industrial PC, equipped with Intel Core i processors, making it perfect for demanding applications like machine vision, complex process control, and data logging. Its modular design allows for flexible configurations, ensuring scalability and robust performance in challenging industrial environments.

B&R Human-Machine Interface

B&R HMI is a family of high-performance panels designed for industrial applications that require robust and efficient control and visualization systems.



Automation Panel 5000

The Automation Panel 5000 Swing Arm Multi-Touch is a versatile HMI solution designed for industrial automation, featuring multi-touch capabilities for intuitive and precise operation. Its swing arm mounting allows flexible positioning, making it ideal for ergonomic and space-saving setups in complex motion and engineering environments.



Power Panel

T-Series

Focused on touch-only operation, offering sleek, modern interfaces with high-performance processors for responsive and intuitive control.

C-Series

Combines touch functionality with physical keys, providing a robust solution for environments requiring both touch and tactile feedback.

Motion Control



**BEST
SELLER**

ACOPOSmulti

ACOPOSmulti offers the highest degree of efficiency for multi-axis machines that are commonly used in the plastics, packaging, print and textile industries. Power factor correction means that only effective power is taken from the power supply, reduces the connected load and current consumption of the machine. With scalable inverter modules, ACOPOSmulti drive system offers maximum performance with minimum volume. ACOPOSmulti drive systems in a POWERLINK network

PRODUCT LINE-UP



ACOPoSmicro

ACOPoSmicro provides drive modules for up to 2 axes for low-power applications. Designed to control both stepper motors and servo motors. Its main features include integrated I/O, compact design, low power loss, uniform design for inverter and stepper motor modules, and variable nominal voltage to achieve higher torque at high speed.



ACOPoS P3

- Servo drive is available as a 1-, 2- or 3-axis system.
- Covers a power range from 0.6 to 18 kW or 1.6 to 44 amps.
- Precision with a sampling time of just 50 μ s for the entire controller cascade .
- Printed circuit boards in 8EI servo drives are coated and thus very robust against environmental influences such as dust or moisture.

B&R Motors



B&R Servo Motor

B&R servo motors are high-performance motors used in precision motion control applications. They are known for their accuracy, reliability, and integration with B&R automation systems.

- High torque density and precision positioning.
- Seamless integration with B&R drives and PLCs.
- Supports feedback systems like encoders for precise control.
- Available in various sizes and power ratings to suit different applications.



B&R Stepper Motor

- High torque
- High overload capability
- Cost-effective encoder options
- Parallel and serial operation
- Optional IP65 protection
- Optional holding brake



Robotic Codian

Codian robot mechanics are synonymous with exceptional performance. The portfolio currently contains of more than 100 variants, including class-leading hygienic models, ideal for applications such as food and beverage and pharmaceutical packaging. Codian's open robot mechanics can be combined with any control platform and are used for precise pick-and-place tasks.

**BEST
SELLER**



Vision System

The B&R Vision System is an advanced machine vision solution integrated into automation systems, designed for precision inspection, quality control, and process optimization in industrial applications. It combines cameras, lighting, and powerful image processing software to detect defects, ensure product quality, and guide robotic operations.

Fully integrated with B&R's automation platform, the system allows seamless communication between vision sensors and other automation components, enhancing productivity and accuracy in manufacturing environments.



PRODUCT LINE-UP

Software & License



B&R Automation Studio

One software for all B&R products

Users can use the Automation Studio for programming, simulation, diagnostics, and control at every stage of B&R product engineering.

Mechatronic System

A series of automated tools for the manufacturing industry, featuring magnetic tracks to transport products while printing them.



SuperTrak

SuperTrak uses magnet technology to guide individually controllable shuttles along a track using long stator linear motors.

ACOPOSTrak

This highly flexible transport system extends the economy of mass production down to batches of one. Parts and products are transported quickly and flexibly from processing station to processing station on independently controlled shuttles.

ACOPOS 6D

Magnetic levitating shuttles move individual products freely through the machine. ACOPOS 6D is ideal for small-batch production with frequent changeover between products of different designs and dimensions.



PRODUCT LINE-UP

B&R Legacy Products

We offer ready stock of B&R obsolete and legacy products to ensure your industrial systems remain operational without costly upgrades. With our reliable stock and fast supply chain, we help you minimize downtime and ensure continued performance for your B&R-based machines.



Legacy ACOPOS Servo Drives

High-performance servo drive design with very short sampling times and communication cycles of 400 μ s. Modular and precise with communication options. Plug-in modules are available to establish network connections with other drives, controllers and visualization devices as well as for the connection of encoders, sensors and actuators. Comes with integrated line filter and integrated braking resistor.

List of obsolete / legacy ACOPOS series

8V1010.XX-X	8V1016.XX-X	8V1022.XX-X	8V1045.XX-X
8V1090.XX-X	8V1180.XX-X	8V1320.XX-X	8V1640.XX-X

List of obsolete / legacy ACOPOS plug-in module

8AC110.60-X	8AC114.60-X	8AC120.60-X	8AC121.60-X
8AC122.60-X	8AC123.60-X	8AC125.60-X	8AC130.60-X
8AC131.60-X			

X20 PLC Series

The X20CP1583 is the entry-level Atom-based X20 controller. Even the smallest controller is equipped with 128 MB DDR2 SDRAM. With an optimum price/performance ratio, it has the same features as all of the larger controllers.



List of obsolete / legacy X20 PLC Series

X20CP1583	X20CP1584	X20CP1585
X20CP1586	X20CP3583	X20CP3584
X20CP3585	X20CP3586	

PILZ

THE SPIRIT OF SAFETY

PILZ GmbH & Co. KG

Pilz is a global supplier of automation components, systems and services. Pilz never compromise when it comes to safety for human, machine and the environment. As a family business steeped in tradition, with a worldwide presence, the aim is to be a reliable partner for you locally.

Safety Switches



PSENmag

Non-contact, magnetic safety switch

PSENmag magnetic safety switches provide position monitoring for guards in compliance with EN 60947-5-3, as well as general position monitoring.



PSENcode

Coded, non-contact safety switch

PSENcode are used to monitor the position of guards in accordance with EN 60947-5-3 and also for position monitoring. PSENcode is open to products from other manufacturers

Safety Gate System



PSENmech

Mechanical safety switch

The mechanical safety switches PSENmech are suitable for safe monitoring of a movable guard. If guards are opened, the safety switches PSENmech are tripped.



PSENmlock

The safety locking device

The PSENmlock provides safe interlocking and guard locking for personnel and process protection up to PL e, using dual-channel control for machines with hazardous overrun.

**BEST
SELLER**



PSENgate

The PSENgate safety gate system combines gate monitoring, safe guard locking, and control elements in one unit, designed for up to PL e. It offers high flexibility with various system types and optional control elements like pushbuttons, key switches, illuminated buttons, and section stop. E-STOP and escape release functions are also available.



PSENopt

High flexibility for individual requirements

PSENopt safety light curtains are ideal for machines needing frequent intervention, supporting applications up to PL c (Type 2) and PL e (Type 4).



PSENopt II

Maximum safety in rugged industrial environments

PSENopt II safety light curtains offer flexible use, quick installation, no dead zones, and 50g shock resistance, even in extreme cold (-25°C) or dusty conditions.



PSENscan

Safety laser scanner

The safety laser scanner PSENscan offers two-dimensional area monitoring with an opening angle of 275 degrees and a protected field range of up to 5.5 meters.



PSENradar

Safety radar

PSENradar safety sensors are ideal for harsh environments where optoelectronic sensors fall short. Using FMCW radar technology (24-24.25 GHz), they ensure high availability even in the presence of dust, dirt, rain, or vibrations.

PRODUCT LINE-UP



Variants

myPNOZ

Safety relay with an internal combination logic.

PNOZsigma

Maximum function in a minimum width

PNOZ X

With wide-voltage power supply unit

PNOZcompact

Ideal for high-volume series machine manufacturers

PNOZelog

With expanded diagnostics

PNOZpower

High loads from 8 A to 16 A

PNOZ Relay Device

Pilz relays are designed to minimize risks to people and machines. For reliable functional safety, we offer the PNOZ safety relay and the modular myPNOZ. The PMD electronic monitoring relays ensure electrical safety.

Safety Controllers



PNOZmulti 2

Small controllers

The 2nd generation PNOZmulti 2 small controllers are a global safety standard for automation, adaptable to various systems and environments. Offering high productivity, user-friendly diagnostics, and easy visualization, they ensure maximum functionality in even the smallest control cabinets.



PNOZ m C0

The smallest safety controller

PNOZ m C0 is safe, high-performance and highly economical for small machines in a range of industries and application areas. The standalone base unit is extremely compact at just 22.5 mm width. With eight freely configurable safe inputs and four safe semiconductor outputs, it monitors up to four safety functions on machines.



PNOZ m B0

The universal option

Configurable safe small controllers, expandable, 20 safe digital inputs, 4 safe semiconductor outputs, – up to PL e, SIL CL 3, depending on the application.



PNOZ m B1

For large-scale projects

No inputs or outputs on the base unit; the number can be controlled, based on the type of I/O modules that are used.

Accessories



Pilz control and signal devices are of use anywhere that could pose a dangerous situation for your staff. They may be used during the commissioning of your system and during regular operation, maintenance or service.



PITestop

E-STOP pushbutton



PITsign

Muting lamps



PITgatebox

Pushbutton unit

Lenze

Lenze

Founded in 1947, Lenze is a global leader in automation technology, drive solutions, and machine engineering systems. With a product lineup that includes gearboxes, motors, inverters, controllers, and software, Lenze delivers cutting-edge solutions for industries like automotive, packaging, robotics, and material handling.



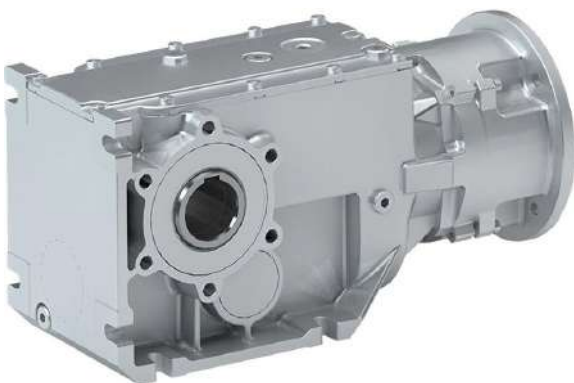
C520 Controller

High-quality control tasks for coordinated movement of multiple axes with high dynamics. High computing power for demanding motion control in compact machines.



3000 I/O Modules

Combines a consistently flexible system design with a compact construction, reduced wiring effort and simple error diagnostics.



G500-B Gearboxes

A combination of motors and gear units designed to provide reliable and efficient torque transmission. These are widely used in conveyor belts, automation systems, and more. Lenze G500-B is a highly efficient right-angle gearbox with a compact design.



EASY Engineering Tool Licenses

EASY Essentials (free of charge) - easy planning: plan and adjust your machine and run diagnostics.

EASY Advanced - easy parameter setting: reinstall and commission your machine.

EASY Professional - easy programming: install and commission your machine with maximum precision, dynamics and safety.

Electric Motors



MCS Synchronous Servo Motors

The MCS synchronous servo motors are particularly suitable for applications that require high dynamics, precision and compact dimensions.

**BEST
SELLER**



MCA Asynchronous Servo Motor

Offers precise control, high performance, and energy efficiency for a wide range of industrial applications. It's designed for fast acceleration and exact positioning, making it ideal for use in robotics, packaging, and automated systems.



IE3 m550-P three-phase AC motors

The m550-P three-phase AC motor is energy-efficient and ideal for both simple and complex tasks. It operates from 0.75 to 45 kW with IE3 efficiency and IP55 protection. Features include four-pole designs, multiple connection options, temperature monitoring, and a modular system for customization.

Inverters (Frequency Converters)



i550 Cabinet Frequency Inverter

A compact and versatile device designed for easy control of various applications like conveyor drives, hoist drives, and packaging machines.



i750 Cabinet Servo Inverter

Delivers precise multi-axis motion control with advanced safety features and One Cable Technology (OCT) for simplified wiring.



**BEST
SELLER**

i950 Cabinet Servo Inverter

Designed for easy integration into modular machine systems, using parameterization instead of complex programming.

PRODUCT LINE-UP



An ITW Company

Simco-Ion

Simco-Ion, the world's largest manufacturer of static control components and systems, has been providing solutions to electrostatic issues in a wide range of industries since 1936. Simco-Ion's comprehensive product line incorporates years of research, engineering, and field experience.



IQ Power

Advanced Static Neutralizing System with Sensor Technology

Designed for use in a wide array of industrial applications and leveraging many patented features, the IQ Power system combines exceptional ionization performance and ultimate monitoring intelligence with user-friendly functionality.

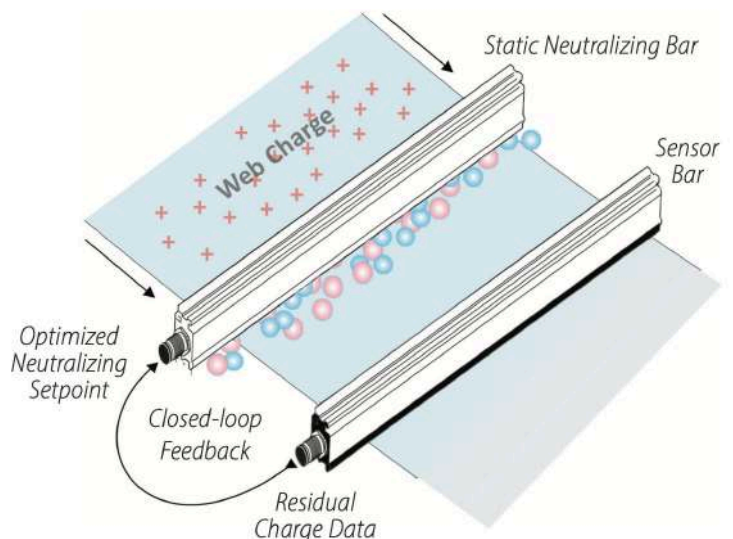
This fully integrated scalable system makes installation a snap. There is no complicated software to install and our "smart addressing" technology and flexible mounting options make this system and its components easy to add to any existing application.

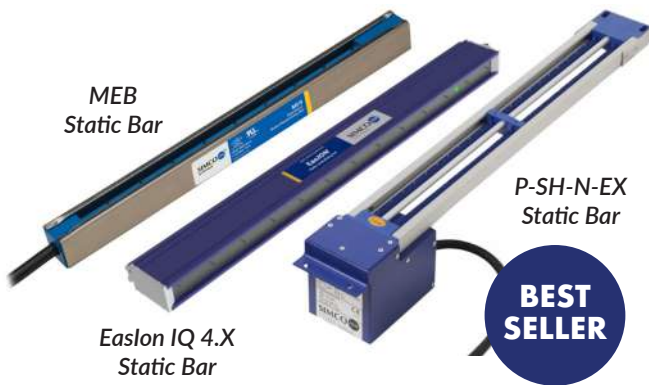
The IQ Power system can connect up to 10 neutralizing or sensing devices. It is also available for hazardous locations including Class 1, Div 1, Group D classified areas.

Control Station Output Modes

The Control Station provides four Output Modes of operation to manage ionization, providing the best results based on your application.

- Fixed Mode
- Auto_tune Mode
- Manual Mode
- Closed-loop Feedback (CLFB) Mode
- Balance Mode
- Pulse Mode





Static Neutralizing & Control Bar

SIMCO-Ion Static Bars are advanced electrostatic control devices designed to neutralize static charges in various industrial applications. These bars help prevent dust attraction, material misalignment, and electrostatic discharge, ensuring smooth and safe operations in printing, packaging, plastics, and electronics industries.



Cobra Static Elimination Gun

The Cobra Static Control Gun provides a powerful blast of static elimination air for cleaning and neutralizing large surfaces. The static control gun uses ionization combined with air flow amplification to produce an air blast that neutralizes static charges and blows away dust and dirt in rugged industrial environments.



Chargemaster® VCM DC High Voltage Power Supply

The Chargemaster VCM is a switch-mode, power factor corrected, charging generator. The units output current is electronically limited and protected against damage from arcing. When the VCM is paired with the Pinner-T charging bar, operating in current mode, this combination offers unparalleled performance and reliability in demanding pinning applications.



Pinner Charging Applicators

Arcing can cause a multitude of problems such as EMI interference, shutdown of production lines and personnel injury due to surprise from electrical shock. Resistance to arcing means that the Pinner applicators continuously supply static charge. This feature makes them easier and safer to set up and use.



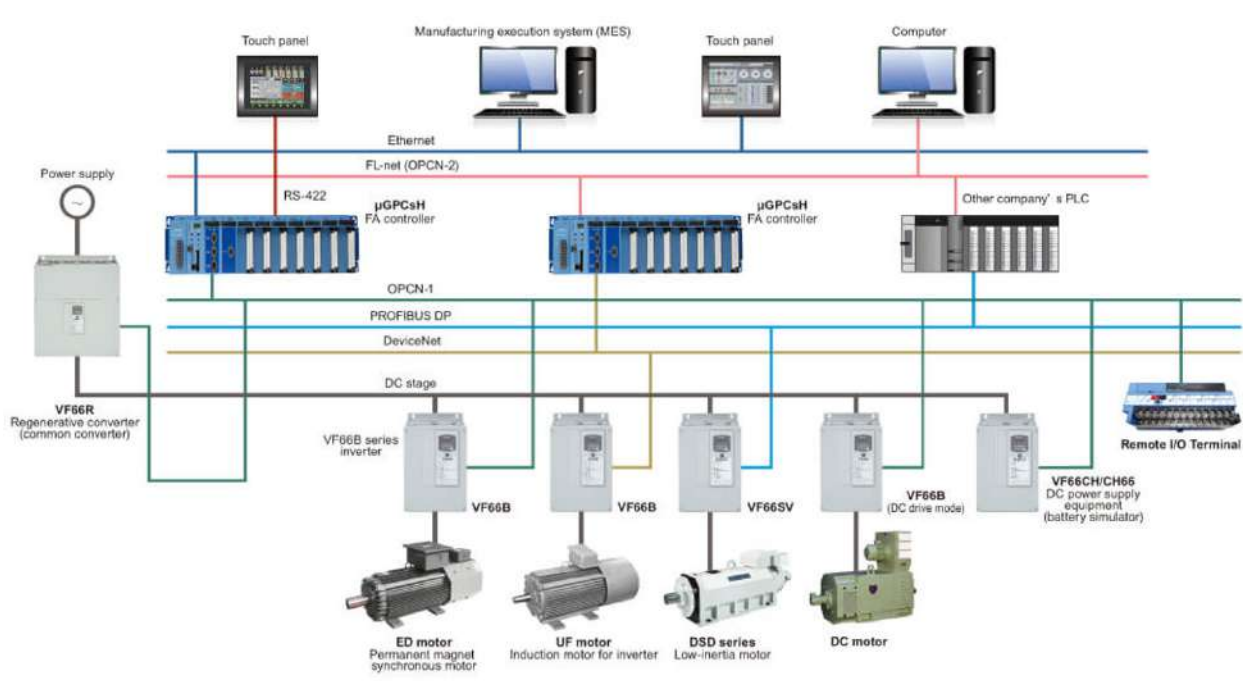
FMX-004 Electrostatic Fieldmeter

The FMX-004 fieldmeter is a compact electrostatic fieldmeter used for locating and measuring static charges. Its pocket size and three-button operation makes it convenient and easy to use. The FMX-004 also offers an optional cable and bracket kit for Analog output. This feature allows you to extract and monitor your data.



Toyo Denki

Toyo Denki was founded in 1918 with the mission of pioneering railway electrical equipment manufacturing in Japan. Since then, Toyo Denki has continued supplying the market with variety of electrical equipment and a wide range of industries, based on the motor drive technology that it has advanced since its foundation.



Toyo Network System (TNS)

TNS flexibly builds optimal network systems, according to network level. The quality of a network environment that links man and machine as well as information and control is determined by the level of its automation. TNS maximizes automation capabilities by combining products according to network level, building rich open networks that include Ethernet and other network technologies.



Inverter

The inverter are designed to take the one-way flow of DC and convert it into the oscillating flow of AC. Toyo Denki offers a wide variety of inverter types:

- Intelligent inverter VF66B
- High-capacity AC servo amp VF66SV
- Inverter for sync control system VF66AD/VF66PD



High-speed/advanced-function FA controller μGPCsH PLC

This controller has complete program compatibility with the μGPC Series, features improved communication interface speed, and offers exceptional connectivity with host PCs, touch panels, and other equipment.



ED Motor (IPM Synchronous Motor)

Using Toyo Denki ED motors dramatically reduces CO2 emissions and saves energy. They deliver about 3% more efficiency than the NEMA standard for high-efficiency motors and 5% more for induction motors for our UF series inverters, thereby helping to lower our customer's costs.

Renewable Energy

Power generation equipment for distributed generation have undergone system upgrades that enable them to easily and efficiently configure clean power generation systems that use wind power, smallscale hydroelectric power, biomass, and other renewable energies through the use of state-of-the-art equipment.

- Wind power generation
- Hydroelectric power generation
- Wave power generation
- Tidal power generation
- Biomass power generation



FATEK® FATEK Automation Corp.

FATEK Automation Corp. was established in 1992 in Taiwan by a group of engineers engaged in PLC design and development for many years. Since its establishment, FATEK has strived for R&D in order to provide high-quality, high-function and user-friendly automatic control products.



PLC Control System

A microprocessor-based device used for automating industrial processes, similar to a CPU, which executes programmed instructions to control machinery and processes with precision and reliability.

Human Machine Interface (HMI)

A display device for factory equipment, such as monitors and panels, is essential for providing real-time data visualization and control interface. These devices ensure optimal performance and efficiency of the machinery.



Internet of Things (IoT)

The Internet of Things (IoT) in industrial automation is revolutionizing the way factories and production lines operate by enabling seamless connectivity and intelligent decision-making. IoT devices collect and transmit real-time data from various equipment and sensors, providing insights into performance, efficiency, and potential issues. This interconnected network allows for predictive maintenance, reducing downtime, and optimizing resource utilization, leading to increased productivity and cost savings.

watanabe

Watanabe Electric Industry Co. Ltd.

Watanabe Electric Industry

Watanabe Electric Industry has continued our unique way of business to date, concentrating on the manufacturing of measurement and control instruments which are the mother tools of industry.



Non-contact Meter Relays

Electric Current Recorders, AC and DC voltmeters / ammeters. Provide precise and reliable measurement of electrical currents.



Electric Current Recorders

Essential tools for accurately tracking and recording electrical currents in various systems, providing valuable data for monitoring and diagnostics.



AP-202A DC voltmeter/ammeter

Digitally output signals output from sensors and devices with high precision and instantaneously. This meter drives by input signal, so the power supply is not required.



Graphical Digital Panel Meter

Offers advanced, real-time display of electrical measurements, combining precision with a clear, intuitive interface to provide easy monitoring and analysis of system performance in various industrial applications.

PROJECT PORTFOLIO

01

PT Pura Barutama

Date : Januari 2024
Project : Bielomatic Machine, Renewal PLC, and Motion Controller System



02

Java Paper

Date : May 2018
Project : Paper Machine Renewal
Product : Toyo Denki High Speed/Advanced Function FA Controller (μ GPCsH PLC)



03

PT Indofood CBP

Date : 2015
Project : Bag Making Machine
Product : B&R



04

PT Ichikoh Indonesia

Date : 2005-2009
Project : Engineering Works for Robotic Arms in Automotive Parts Manufacturer



05

PT Sumi Indo Kabel

Date : September 2007
Project : Engineering Works for Cable Manufacturer



PROJECT PORTFOLIO

Our scope of work includes:

Regular Maintenance

Troubleshooting PLC & Servo Drive

Device Program Backup

Repair Current Control Board

Configuration Repair PC HMI

**Renewal PLC & Servo System
Spare Parts**

Visit and Survey Problem Checking

and many more...

More recent projects



**PT Caprifarmindo
(Sanbe Farma
Group)**



**PT Rayovac Battery
Indonesia**

PT DWIPA RAYA UNIX

Ruko Ice Business Park Blok B19, BSD
Jl. BSD Grand Boulevard, Pagedangan.
Banten 15339

Email

office@dwiparaya.com

Phone

(+62) 811 1230 0254

WhatsApp

(+62) 811 1230 0254

www.dwiparaya.com

